

Záznam o meraní

útvár: centrum termometrie, dĺžky, času a elektriny C280

číslo požiadavky:	460 XXX
účel merania:	overenie
miesto merania:	Laboratórium fotometrie H120
dátum merania:	XX.ZZ.YY
predmet merania:	luxmeter
výrobné číslo predmetu merania:	XXXXXXXX
pracovný postup:	PP14-270-00
podmienky okolia:	t= 21,6 stC, e= 56%

Meranie časovej nestability:

Intenzita osvetlenia po 10s:	E10s = 1000lx
Intenzita osvetlenia po 10 min.:	E10min = 1001,3 lx

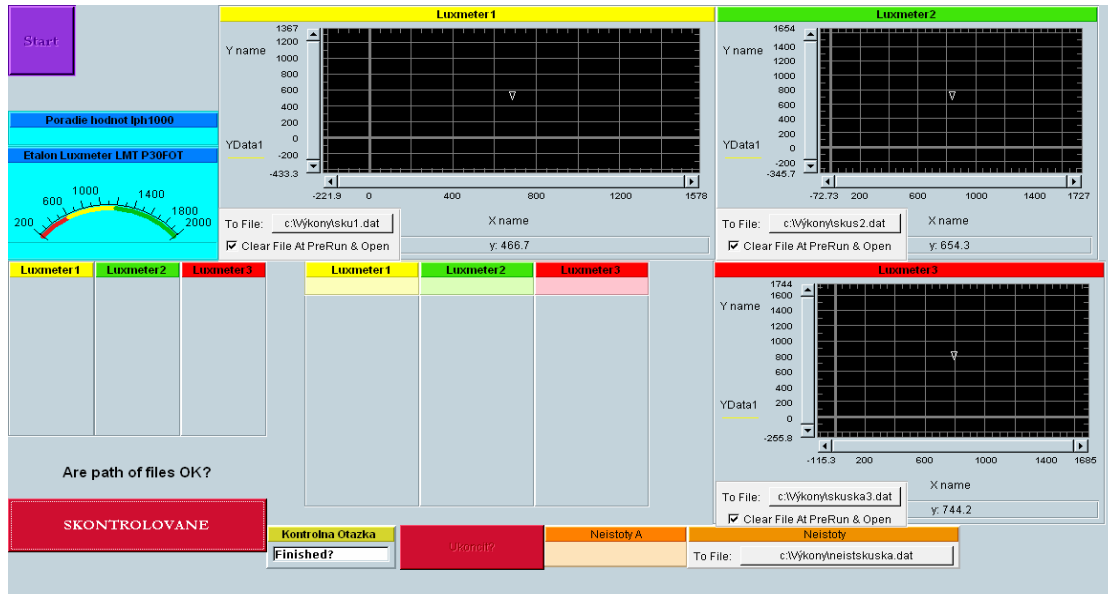
Kalibrácia fotom. stupnice. Namerané hodnoty su inportované z programu VEE pro:

fost2az20:	neistota (uA):
{2, 2.0809}	0.0025
{6.5, 6.5900}	0.0048
{11, 11.0940}	0.012
{15.5, 15.5924}	0.0164
{20, 20.1212}	0.01029

fost20az200:	neistota (uA):
{20, 19.9428}	0.0076
{65, 65.0687}	0.0196
{110, 110.3313}	0.0224
{155, 158.7789}	0.0224
{200, 204.6204}	0.03

fost200az2000:	neistota (uA):
{200, 202.2275}	0.0116
{650, 653.2275}	0.0348
{1100, 1105.7980}	0.0898
{1550, 1560.1217}	0.0803
{2000, 2014.6896}	0.1472

fost1000az10000:	neistota (uA):
{1000, 1002.7170}	0.0613
{3250, 3267.5245}	0.1262
{5500, 5639.7032}	1.8839
{7750, 7957.7691}	0.4677
{10000, 10250.8185}	4.0516



Kalibrácia spektrálnej citlivosti luxmetra:

namerané hodnoty:

λ (nm)	HAM1/(uA)	Luxmeter/(lx)
360	22.57	0.60
370	25.27	0.60
380	29.76	0.70
390	34.70	0.90
400	40.10	3.30
410	38.10	11.80
420	39.20	20.11
430	42.20	33.10
440	40.00	47.99
450	50.30	90.40
460	62.20	179.10
470	80.20	345.70
480	67.20	435.00
490	65.50	626.00
500	61.20	895.00
510	61.30	1365.00
520	61.60	1842.00
530	61.70	2161.00
540	62.10	2333.00
550	62.30	2410.00
560	62.70	2352.00
570	63.10	2216.00
580	63.60	2000.00
590	64.40	1718.00
600	62.10	1341.00

Nastavenie	grating2
monochromátoru:	šírka štr.1,7mm
	Xe

610	62.30	1024.00
620	64.90	775.00
630	62.20	514.90
640	58.70	320.30
650	59.60	205.40
(filter4),660	46.30	98.10
670	46.80	56.30
680	45.50	30.02
690	47.90	16.84
700	36.80	6.90
710	36.30	3.52
720	31.80	1.73
730	34.70	1.00
740	32.40	0.62
750	28.60	0.40
760	28.90	0.30
770	23.80	0.25
780	17.90	0.21
790	21.60	0.20
800	19.40	0.19

Meranie smerovej závislosti luxmetra:

uhol alfa		Meranie [lx]		
[°]	[rad]	dolava	doprava	priemer [lx]
0	0	90	90	90
5	0.08727	89.7	89.7	89.7
10	0.17453	88.78	88.8	88.8
15	0.2618	87.2	87.2	87.2
20	0.34907	84.8	84.85	84.8
25	0.43633	81.7	81.84	81.8
30	0.5236	78	78.1	78
35	0.61087	73.85	73.9	73.9
40	0.69813	68.7	69.07	68.9
45	0.7854	63.25	63.6	63.4
50	0.87266	57.32	57.5	57.4
55	0.95993	50.95	51.22	51.1
60	1.0472	43.66	44.1	43.9
65	1.13446	36.77	37.05	36.9
70	1.22173	29.4	29.69	29.6
75	1.309	22.2	22.39	22.3
80	1.39626	15.01	15.05	15
85	1.48353	0.3	0.38	0.3